

SAE Flanged Ball Valves

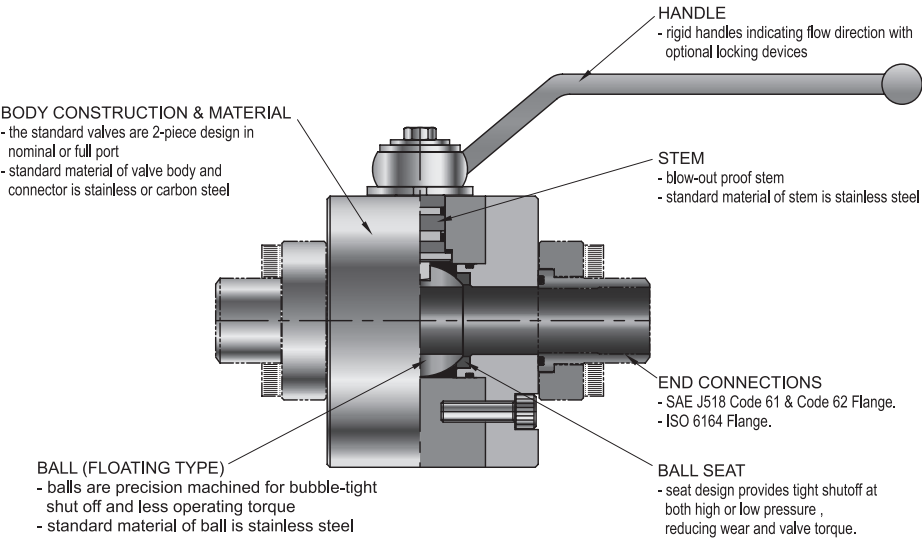


SAE J518 & ISO 6164 Flanged Ball Valves

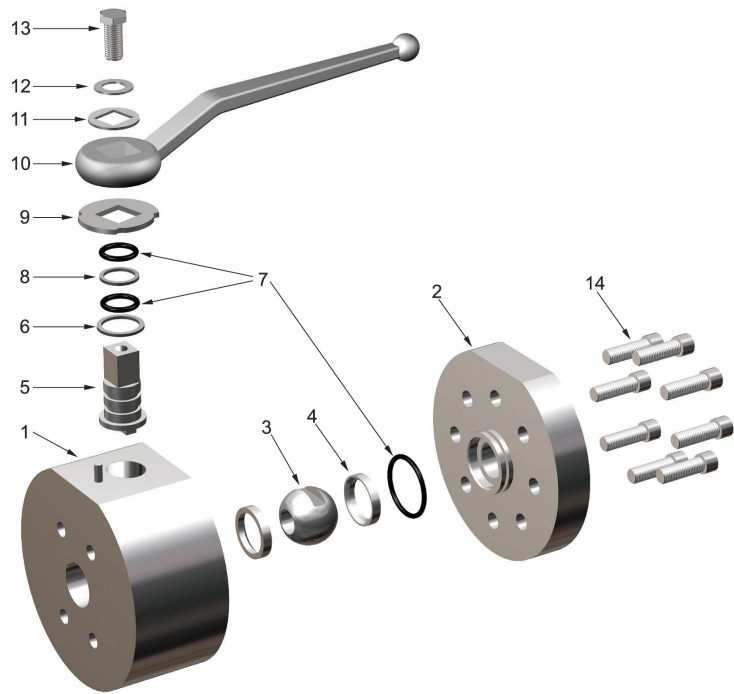
SBVE Series

Features

- Dual pattern Code 61 & 62
- Compact design
- Blow out proof stem
- Fire safety design
 - API 607 / BS 6755 PART 2
- End connection
 - SAE J518 Code 61 & 62 Flanged
 - ISO 6164 Flanged
- Pressure Rating
 - SAE J518 CODE 61 : 3000psi
 - SAE J518 CODE 62 : 6000psi
 - ISO 6164 : PN250, PN400
- Temperature range
 - -20°C ~ 180°C



Materials of Construction

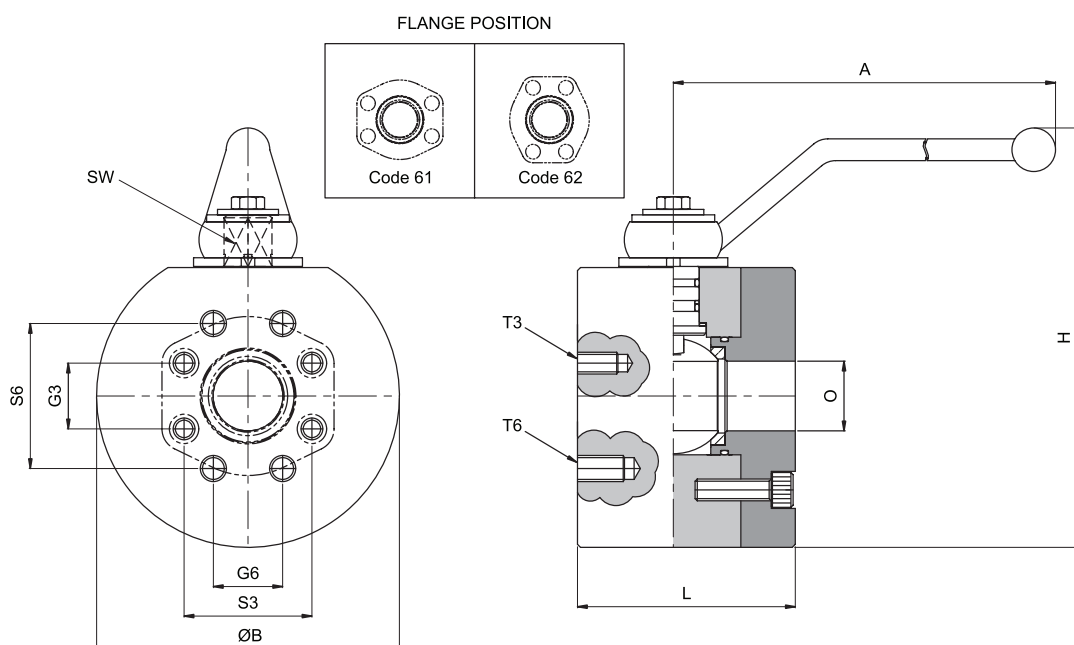


NO.	COMPONENT	MATERIAL
1	BODY	A182 F316 / A105+Zinc plated
2	BODY CAP	A182 F316 / A105+Zinc plated
3	BALL	A479 TP316
4	BALL SEAT	PEEK / DEVLON
5	STEM	A479 TP316 / A564 TP630
6	THRUST WASHER	PEEK
7	O-RING	VITON
8	BACKUP RING	PTFE
9	LOCKING DEVICE	Stainless Steel
10	HANDLE	Stainless Steel / Carbon Steel
11	STEM WASHER	A276 TP316
12	WASHER	Stainless Steel
13	STEM BOLT	Stainless Steel
14	BODY BOLT	Stainless Steel / Carbon Steel

- Components can limit the pressure and temperature ranges of the valve. Please consult BMT (SUPERLOK) sales representative for your specific application.

SBVE to SAE 30/60

Table of dimensions



SAE J518 CODE 61 (3000psi)

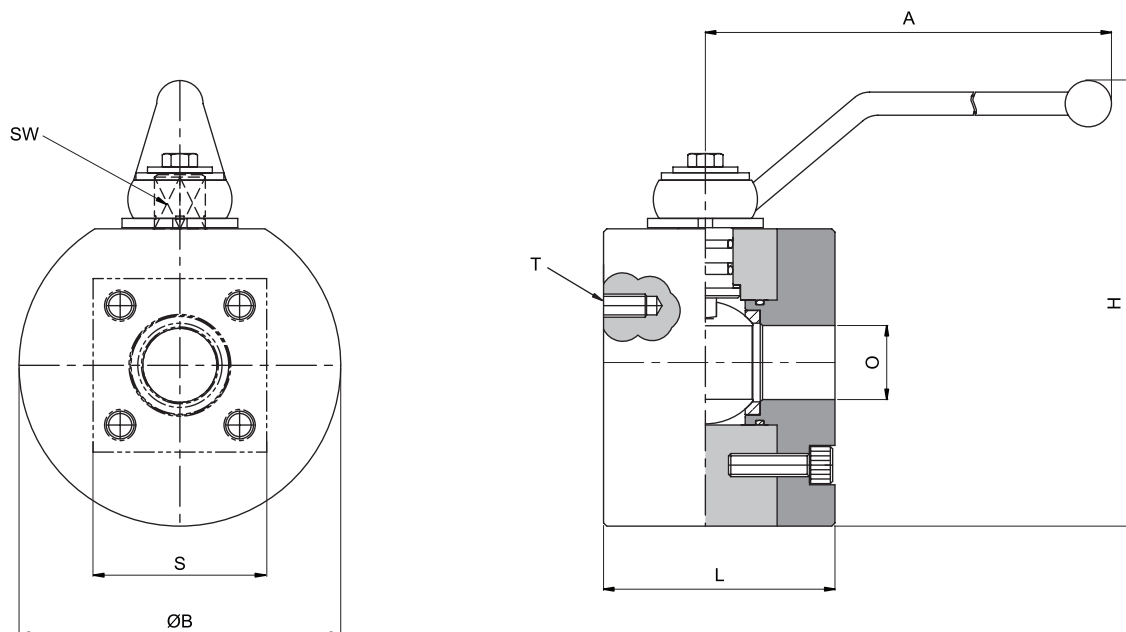
Part No.	Nominal Flange Size (inch)	DN	Nominal Working Pressure (bar)	O	A	ØB	H	L	T3 METRIC (UNC)	S3	G3	SW
SBVE - 15 - SAE30	1/2	15	210	15	160	78	130	75	M8 (5/16" UNC)	38.10	17.48	12
SBVE - 20 - SAE30	3/4	20	210	19	200	98	155	80	M10 (3/8" UNC)	47.63	22.23	14
SBVE - 25 - SAE30	1	25	210	25	200	118	170	88	M10 (3/8" UNC)	52.37	26.19	14
SBVE - 32 - SAE30	1-1/4	32	210	32	250	145	205	100	M10 (7/16" UNC)	58.72	30.18	17
SBVE - 40 - SAE30	1-1/2	40	210	38	250	165	230	110	M12 (1/2" UNC)	69.85	35.71	17
SBVE - 50 - SAE30	2	50	210	48	300	198	255	116	M12 (1/2" UNC)	77.77	42.88	19
SBVE - 65 - SAE30	2-1/2	65	210	63	300	198	260	150	M12 (1/2" UNC)	88.90	50.80	19
SBVE - 80 - SAE30	3	80	210	76	350	210	280	180	M16 (5/8" UNC)	106.38	61.93	24
SBVE - 100 - SAE30	4	100	210	88	400	258	345	200	M16 (5/8" UNC)	130.18	77.77	24

SAE J518 CODE 62 (6000psi)

Part No.	Nominal Flange Size (inch)	DN	Nominal Working Pressure (bar)	O	A	ØB	H	L	T6 METRIC (UNC)	S6	G6	SW
SBVE - 15 - SAE60	1/2	15	420	13	160	78	130	75	M8 (5/16" UNC)	40.49	18.24	12
SBVE - 20 - SAE60	3/4	20	420	19	200	98	155	80	M10 (3/8" UNC)	50.80	23.80	14
SBVE - 25 - SAE60	1	25	420	25	200	118	170	88	M12 (7/16" UNC)	57.15	27.76	14
SBVE - 32 - SAE60	1-1/4	32	420	32	250	145	205	100	M14 (1/2" UNC)	66.68	31.75	17
SBVE - 40 - SAE60	1-1/2	40	420	38	250	165	230	120	M16 (5/8" UNC)	79.38	36.50	17
SBVE - 50 - SAE60	2	50	420	43	300	198	255	130	M20 (3/4" UNC)	96.82	44.45	19
SBVE - 65 - SAE60	2-1/2	65	420	60	300	198	260	150	M24 (1" UNC)	123.80	58.80	19
SBVE - 80 - SAE60	3	80	420	63	350	210	280	180	M30 (1-1/8" UNC)	152.40	71.60	24

SBVE to ISO 25/40

Table of dimensions



ISO 6164-2 (250bar)

Part No.	Nominal Flange Size (inch)	DN	Nominal Working Pressure (bar)	O	A	ØB	H	L	T METRIC (UNC)	S	SW
SBVE - 15 - ISO25	1/2	15	250	15	160	79	130	75	M10 (3/8" UNC)	60	12
SBVE - 20 - ISO25	3/4	20	250	19	200	99	155	80	M12 (7/16" UNC)	70	14
SBVE - 25 - ISO25	1	25	250	25	200	118	170	88	M12 (7/16" UNC)	80	14
SBVE - 32 - ISO25	1-1/4	32	250	32	250	139	205	100	M16 (5/8" UNC)	90	17
SBVE - 40 - ISO25	1-1/2	40	250	38	250	160	230	110	M16 (5/8" UNC)	90	17
SBVE - 50 - ISO25	2	50	250	48	300	179	255	116	M16 (5/8" UNC)	100	19

ISO 6164-2 (400bar)

Part No.	Nominal Flange Size (inch)	DN	Nominal Working Pressure (bar)	O	A	ØB	H	L	T METRIC (UNC)	S	SW
SBVE - 15 - ISO40	1/2	15	400	13	160	79	130	75	M10 (3/8" UNC)	60	12
SBVE - 20 - ISO40	3/4	20	400	19	200	99	155	80	M10 (3/8" UNC)	60	14
SBVE - 25 - ISO40	1	25	400	25	200	119	170	88	M12 (7/16" UNC)	70	14
SBVE - 32 - ISO40	1-1/4	32	400	32	250	139	205	100	M12 (7/16" UNC)	80	17
SBVE - 40 - ISO40	1-1/2	40	400	38	250	160	230	120	M16 (5/8" UNC)	90	17
SBVE - 50 - ISO40	2	50	400	43	300	179	255	130	M16 (5/8" UNC)	100	19

Ordering Information

Example :

SBVE - 15 - SAE30 - N - C

1. Connection Size

Size (inch)	1/2	3/4	1	1-1/4	1-1/2	2	2-1/2	3	4	5
Designator	15	20	25	32	40	50	65	80	100	125

2. Connection Type

- ☐ **SAE** = SAE J518 Code 61 / 62
- ☐ **ISO** = ISO 6164 - 2

3. Nominal Pressure

- ☐ **30** = 3000psi
- ☐ **60** = 6000psi
- ☐ **25** = 250bar
- ☐ **40** = 400bar

4. Stem Seal

- ☐ **(Blank)** = VITON
- ☐ **N** = NBR

5. Body Material

- ☐ **(Blank)** = Stainless Steel
- ☐ **C** = Carbon Steel



BMT Co., Ltd.

| Head Quarter & 1st Factory

(50568) 경상남도 양산시 산막공단남11길 35 (북정동)

35, Sanmakgongdannam 11-gil, Yangsan-si, Gyeongsangnam-do, 50568, South Korea

TEL: +82 55 783 1000 FAX: +82 55 783 1111

E-mail: superlok@superlok.com

| 2nd Factory

(50568) 경상남도 양산시 산막공단남8길 29 (호계동)

29, Sanmakgongdannam 8-gil, Yangsan-si, Gyeongsangnam-do, 50568, South Korea

Fittings & Valves

INDUSTRIAL

Instrumentation Tube Fittings

i-Fitting®

Ball/Plug Valves

Double Block & Bleed Valves

Manifold/Gauge Valves

Globe/Needle Valves

Cryogenic Valves

Check/Relief/Excess Flow Valves

High Pressure Valves

ULTRA HIGH PURITY

Weld & Metal Face Seal Fittings

Bend Fittings

Diaphragm Valves

Bellows Valves

Check Valves

Clean Ball Valves

Regulators

Electric & Energy

PRODUCT & SOLUTION

Compact Switchboard

Motor Control Center (MCC)

Smart Distribution Board

Energy Management System (EMS)

COMPONENTS (BMT PATENTED)

MCBS (Molded Case Busbar System)

MCPD (Molded Case Power Distributor)

Smart-eye (AC/DC Meter)