

THE BEST SOLUTION

For Pressure, Temperature, Flow, Level and Gas Measurement

WISE[®] (주) 와이즈산전
WISE Control Inc.

Pressure instruments



P110

General service pressure gauge
Dial: 40, 50, 60, 75, 100, 150 and 200mm
Range: -0.1 to 0~100MPa
Case steel, element brass



P111

Ammonia service pressure gauge
Dial: 75 and 100mm
Range: -0.1~1, 1.5, 2MPa
Case steel, element 316SS



P112

Freon gas service pressure gauge
Dial: 60 and 75mm
Range: -0.1~0 to 0~3.5MPa
Case steel, element brass



P140

General service pressure gauge
Dial: 60 and 100mm
Range: -0.1~0 to 0~35MPa
Case polycarbonate, element brass



P163

Heavy duty service pressure gauge
Dial: 80mm
Range: -0.1~0 to 0~25MPa
Case bronze, element brass



P170

Low cost diaphragm seal type
pressure gauge (sludge water line)
Upper flange, under flange: 304SS
Diaphragm: 316LSS
Range: 0~10MPa



P221

Industrial service pressure gauge
Dial: 40, 50mm
Range: 0~0.2, 0.4, 0.6, 1, 1.5MPa
Case 304SS, element 316SS



P222

Industrial service pressure gauge
Dial: 4 1/2 inch (125mm)
Range: -0.1~0 to 0~200MPa
Case 304SS, element 316SS



P228

Receiver gauge
Dial: 100 and 160mm
Range: 0~10 square root, 0~100%
Case 304SS, element 316SS



P229

Test pressure gauge
Dial: 160mm
Range: -0.1~0, 0~0.1, to 0~200MPa
Case 304SS, element 316SS



P235S P235B

Miniature pressure gauge
Dial: 35mm
Range: 0~0.2 to 0~3.5MPa
P235S: case (304SS), element 316SS
P235B: case (304SS), element brass



P239

Test pressure gauge
Dial: 160mm and 250mm
Range: 0~60kPa, 0~100MPa
Case: SUS 304 (160Ø)
Case aluminium 250Ø, element 316SS



P252

Industrial service pressure gauge
Dial: 63 and 80mm: -0.1~0, to 0~100MPa
Dial: 100 and 160mm: -0.1~0, to 0~200MPa
Case 304SS, element 316SS or specify



P253

Industrial service pressure gauge
Dial: 63mm: -0.1~0, to 0~35MPa
Dial: 100 and 160mm: -0.1~0, to 0~100MPa
Case 304SS, element Cu alloy 2.0460



P254

General liquid filled pressure gauge
Dial: 60, 75 to 100mm
Range: -0.1~0, 0~40MPa
Case 304SS, element brass



P255

Crimped - on ring case pressure gauge
Dial: 63, 80mm: -0.1~0 to 0~100MPa
100mm: -0.1~0 to 0~200MPa
Case stainless steel (316SS)



P257

Solid front safety pressure gauge
Dial: 63, 100 and 160mm
Range: -0.1~0 to 0~200MPa
Case 304SS, element 316SS



P258

Liquid filled industrial pressure gauge
Dial: 63 and 80mm: -0.1~0, to 0~100MPa
Dial: 100 and 160mm: -0.1~0, to 0~200MPa
Case 304SS, element 316SS or specify



P259

Liquid filled industrial pressure gauge
Dial: 63mm: -0.1~0, to 0~35MPa
Dial: 100 and 160mm: -0.1~0, to 0~100MPa
Case 304SS, element Cu alloy 2.0460



P330

Process industry pressure gauge
Dial: 150mm
Range: -0.1~0 to 0~200MPa
Case aluminium, element 316SS



P336 P338

Duplex pressure gauge
Dial: 100mm
P338 (110(W) × 110(H)mm)
Range: 0~0.4 to 0~3.5MPa
Case aluminium, element 316SS



P339

Safety pattern pressure gauge
Dial: 125mm
Range: -0.1~0 to 0~200MPa
Case aluminium, element 316SS



P359

Solid front safety pattern pressure gauge
Dial: 125mm
Range: -0.1~0 to 0~200MPa
Case PBTB, element 316SS



P359

External adjustable solid front safety pattern pressure gauge
Dial: 125mm
Range: -0.1~0 to 0~200MPa
Case PBTB, element 316SS



P410 P420

Draft gauge
Dial: 192mm(W) × 96mm(H),
192mm(H) × 96mm(W)
Range: -10~0 to 0~10kPa
Case P410(steel) P420(304SS), element 316LSS



P421

Low pressure gauge
Dial: 75, 100 and 160mm
Range: -50~0 to 0~50kPa
Case 304SS, element 316LSS
Movement: brass



P422

Low pressure gauge
Dial: 80, 100 to 160mm
Range: 20~350mbar
Case 304SS, element 316SS,
movement 304SS



P428 P429

Diaphragm type low pressure gauge
Dial: 100 and 150mm
Range: -30~0 to 0~35kPa
Element 316LSS



P430

Low pressure gauge
Dial: 100 and 150mm
Range: -30~0 to 0~35kPa
Case aluminium, element 316LSS



P440

Low pressure gauge with Cr plated steel case
Dial: 63, 75 and 100mm
Range: -50~0 to 0~50kPa
Element beryllium copper



P500

Inductive contacts type
pressure gauge
Dial: 100 and 160mm
Range: -0.1~0 to 0~200MPa
Element 316SS



P510

Electrical contact pressure gauge
modular system
Dial: 100 and 160mm
Range: -0.1~0 to 0~200MPa
Element 316SS



P520

Electrical contact pressure gauge
Dial: 100mm
Range: -0.1~0 to 0~200MPa
Element 316SS



P530

Electrical contact pressure gauge
Dial: 100 and 150mm
Range: -0.1~0 to 0~100MPa
Case aluminium, element 316SS



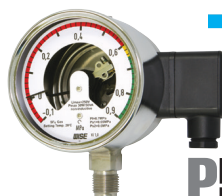
**P535
P536**

Indicating pressure switch
Dial: 100 and 150mm
Range: -0.1~0 to 0~35MPa
Case aluminium, element 316SS



P542

Electrical contact pressure gauge
with Cr plated Zn case
Dial: 100 and 150mm
Range: -0.1~0.6 to -0.1~1MPa
Element 316SS



P590

SF₆ gas density monitor
Dial: 100mm
Range: 0.1~0.1 to 0.1~2MPa
Case 304SS, element 316SS



**P620
P630**

Differential pressure gauge
Dial: 100 and 150mm
Range: 0~1kPa to 0~1.5MPa
Case 304SS, element 316LSS



**P621~5
P631~5**

Differential pressure gauge
with electrical contact
Dial: 100 and 150mm
Range: 30mbar to 0~1.5MPa
Case 304SS, element 316LSS



**P641~5
P651~5**

Indicating differential pressure switch
Dial: 150mm
Range: 30mbar to 1.5MPa
Case aluminium, element 316LSS



**P710
P720
P730**

Diaphragm seal type pressure gauge
Dial: 63, 80, 100 and 160mm
Range: -0.1~0 to 0~35MPa
Flange: 304SS, 316SS, 316LSS
Diaphragm: 316LSS



P711

Diaphragm seal type pressure
gauge for chlorination
Upper flange, under flange: 316LSS
Diaphragm: tantalum
Dial: 63, 80 to 100mm
Acid resistance painting

NEW



P711

Diaphragm seal type pressure gauge
Upper flange, under flange: PVC
Diaphragm: teflon
Range: -0.1~0, 0~1.5MPa

NEW



P751

Sanitary pressure gauge DIN nut type
Dial: 63, 80 and 100mm
Range: -0.1~0 to 0~7MPa
Element 316SS

NEW



**P751
P752**

Sanitary pressure gauge
P751: nut type
P752: tri-clamp type
Dial: 63, 80 and 100mm
Range: -0.1~0 to 0~5MPa
Element 316LSS



P753

Sanitary pressure gauge
Dial: 63 and 100mm
Range: 0.2~1.5MPa
Element 316SS

NEW



**P753
P754**

Sanitary pressure gauge
P753: male screw type
P754: cooling fin type
Dial: 63, 80 and 100mm
Range: -0.1~0 to 0~5MPa
Element 316LSS



P740

High temperature
pressure gauge
Dial: 100mm
Pocket: 80, 100 and 150mm
Range: 10~50MPa
Element 316LSS



P752

Sanitary pressure gauge
Dial: 63, 80 and 100mm
Range: 0.1 vacuum to 7MPa
Element 316LSS

74-03



**P755
P756**

Sanitary pressure gauge
P755: homogenizer type
P756: homogenizer flange type
Dial: 100mm
Range: 10~50MPa
Element 316LSS



P757

Sanitary pressure gauge
Dial: 63, 80 and 100mm
Range: 0.6~2.5MPa
Element 316LSS



P771 P772

Dry type diaphragm pressure gauge
Dial: 100mm and 160mm
Range: 0~1kPa, 0~40kPa (flange 150mm)
Range: 0~50kPa, 0~25MPa (flange 100mm)
Diaphragm mat'l: ≤ 40 kPa (316Ti)
 >40 kPa: duratherm (NiCrCo-alloy)



P810 P820 P830

Ultra high purity pressure gauge
Dial: 50 and 63mm
Range: -0.1~0 to 0~25MPa
Element 316LSS



P840

Ultra high purity pressure switch
Dial: 50mm
Range: -0.1~0 to 0~25MPa
Element 316LSS



PT840

Ultra high purity pressure gauge
with transmitter
Dial: 50mm
Range: -0.1~0 to 0~25MPa
Element 316LSS



P870

Anti-corrosion pressure gauge
Dial: 50mm
Range: -0.1~0 to 0~1MPa
Case PP resin,
element fluorine resin (PFA)

Accessories



A070

Gauge protector (bellows type)
Body mat'l: 316LSS
Bellows: 316LSS
Accuracy: $\pm 5\%$
Range: 20mbar~4MPa



A070(N) A070(H)

Gauge protector
Body mat'l: 316LSS
Accuracy: $\pm 10\%$
Range: 0.5~40MPa



A070(P) A070(L)

Gauge protector
Body mat'l: 316LSS
Accuracy: $\pm 10\%$
Range: 10~40mbar



A080(W) A080(T) A080(F)

Instrument valve
Instrument manifold valve
Max. working pressure: 41MPa
Max. working temperature: 240°C
Packing: PTFE and graphite



A090

Sunshade
SS230: 230 × 370 × 125
SS410: 410 × 350 × 170
Mat'l: GRP/FRP



PTFE lined instrument tee
Fixed flange: DN20~DN600
Mat'l: A105, SS400



Temperature instruments



T110

Centre back conn. direct

Industrial bimetal thermometer
Dial: 50, 63, 75, 100, 125 and 150mm
Range: -50~50 to 0~600°C
Case 304SS, element coiled bimetal



T112

Centre back conn. direct

Hermetically sealed case bimetal thermometer
Dial: 65, 75, 100, 125 and 150mm
Range: -50~50 to 0~600°C
Case 304SS, element coiled bimetal



T114

Centre back conn. direct

General service bimetal thermometer
Dial: 75 and 100mm
Range: 0~50 to 0~350°C
Case Cr plated steel
Element coiled bimetal



T120

Bottom conn. direct

Process industry bimetal thermometer
Dial: 75 and 100mm
Range: -50~50 to 0~600°C
Case 304SS, element coiled bimetal



T123

Bottom conn. direct

Sanitary bimetal thermometer
Dial: 75 and 100mm
Range: -30~120 to 0~600°C
Case 304SS, element coiled bimetal



T140

Centre back with angle stem

Process industry bimetal thermometer
Dial: 75, 100, 125 and 150mm
Range: -50~50 to 0~600°C
Case 304SS, element coiled bimetal



T150

EURO Gauge

Bimetal thermometer with adjustable bottom/center back/adjustable stem
Dial: 80, 100 and 160mm
Range: -70 to 0~600°C
Case 304SS, element coiled bimetal



T190

Centre back adjustable stem

Process industry bimetal thermometer
Dial: 75, 100, 125 and 150mm
Range: -50~50 to 0~600°C
Case 304SS, element coiled bimetal



T191

Centre back with adjustable stem

Hermetically sealed case bimetal thermometer
Dial: 100, 125 and 150mm
Range: -50~50 to 0~600°C
Case 304SS, element coiled bimetal



T210

Bottom conn. surface

Remote reading thermometer
Dial: 100 and 150mm
Range: -200~100 to 0~700°C
Case 304SS, liquid and gas operated system



T219

Oil filled

Remote reading thermometer
Dial: 100 and 150mm
Range: -200~100 to 0~700°C
Case 304SS,
liquid and gas operated system



T220

Direct reading thermometer
Dial: 100 and 150mm
Range: -200~100 to 0~700°C
Case 304SS,
liquid and gas operated system



T229

Oil filled

Direct reading thermometer
Dial: 100 and 150mm
Range: -200~100 to 0~700°C
Case 304SS,
liquid and gas operated system



T230

Bottom conn. surface

Remote reading thermometer
Dial: 100 and 160mm
Range: -200~100 to 0~700°C
Case 304SS,
liquid and gas operated system



T239

Oil filled

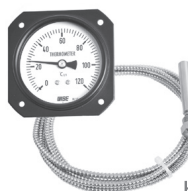
Remote reading thermometer
Dial: 100 and 160mm
Range: -200~100 to 0~700°C
Case 304SS,
liquid and gas operated system



T250

Bottom conn. direct

Direct reading thermometer
Dial: 100 and 160mm
Range: -200~100 to 0~700°C
Case 304SS,
liquid and gas operated system



T263

Heavy duty service

Remote reading thermometer
Dial: 80mm
Range: -50~50 to 0~700°C
Case black finished bronze,
liquid and gas operated system



T290

Adjustable stem

Direct reading thermometer
Dial: 100 and 150mm
Range: -200~100 to 0~700°C
Case 304SS,
liquid and gas operated system



T359

Bottom conn. direct

Safety pattern direct reading thermometer
Dial: 125mm
Range: -200~100 to 0~700°C
Case PBTB, liquid and gas operated system



T360

Bottom conn. surface

Safety pattern remote reading thermometer
Dial: 125mm
Range: -200~100 to 0~700°C
Case PBTB, liquid and gas operated system



T400

Glass thermometer
straight type or angle type
Range: -50~50 to 0~700°C
Case aluminium alloy,
liquid and gas operated system



T500

Bottom conn. surface

Inductive contact type temperature gauge
Dial: 100mm
Range: -50~600°C
Case 304SS, liquid and gas operated system



T520

Bottom conn. surface

Electrical contacts temperature gauge
Dial: 100mm
Range: -50~600°C
Case 304SS,
liquid and gas operated system



T710

Bottom conn. surface

Remote reading thermometer
Dial: 100 and 150mm
Range: -50~50 to 0~700°C
Case black finished aluminium,
liquid and gas operated system



T720

Bottom conn. direct

Direct reading thermometer
Dial: 100mm
Range: -50~50 to 0~700°C
Case black finished aluminium,
liquid and gas operated system



T751

Electrical contact and DIN

Direct reading bimetal thermometer
Dial: 100mm
Range: -50~50 to 0~700°C
Case 304SS, element coiled bimetal



T931 T932

Indicating temperature switch
Dial: 150mm
Range: -50~50 to 0~700°C
Case aluminium,
liquid and gas operated system



Pressure & temperature transmitters



P72S

Explosion proof type pressure transmitter with local display
0~0.1 to 0~350bar gauge/absolute



P74S

Explosion proof type pressure transmitter with local display
0~250mmH₂O to 70bar gauge/absolute



**P115
P125**

Circular connector pressure transmitter
0~0.5 to 0~500bar gauge/absolute
0~0.1 to 0~350bar gauge/absolute



**P116
P126**

DIN connector pressure transmitter
0~0.5 to 0~500bar gauge/absolute
0~0.1 to 0~350bar gauge/absolute



**P117
P127**

Flying leads pressure transmitter
0~0.5 to 0~500bar gauge/absolute
0~0.1 to 0~350bar gauge/absolute



**P118
P128**

General head pressure transmitter
0~0.5 to 0~500bar gauge/absolute
0~0.1 to 0~350bar gauge/absolute



**P119
P129**

Explosion proof head pressure transmitter
0~0.5 to 0~500bar gauge/absolute
0~0.1 to 0~350bar gauge/absolute



**P316
P326**

Compact pressure transmitter
0~0.5 to 0~500bar gauge/absolute
0~0.1 to 0~350bar gauge/absolute



**P317
P327**

Compact pressure transmitter
0~0.5 to 0~500bar gauge/absolute
0~0.1 to 0~350bar gauge/absolute



P424

Sanitary pressure transmitter
0~0.2 to 0~50bar gauge/absolute

NEW



NEW

P425

Sanitary pressure transmitter
0~0.2 to 0~50bar gauge/absolute



NEW

P426

Sanitary pressure transmitter
0~0.2 to 0~50bar gauge/absolute



NEW

P428

Sanitary pressure transmitter
0~0.2 to 0~50bar gauge/absolute

**P515
P525**

Flush diaphragm
pressure transmitter
0~1 to 0~50bar gauge/absolute
0~0.1 to 0~35bar gauge/absolute

**P516
P526**

Flush diaphragm
pressure transmitter
0~1 to 0~50bar gauge/absolute
0~0.1 to 0~35bar gauge/absolute

**P517
P527**

Flush diaphragm
pressure transmitter
0~1 to 0~50bar gauge/absolute
0~0.1 to 0~35bar gauge/absolute

**P518
P528**

Flush diaphragm
pressure transmitter
0~1 to 0~50bar gauge/absolute
0~0.1 to 0~35bar gauge/absolute

**P616**

Pressure gauge with transmitter
0~0.5 to 0~500bar gauge/absolute
0~0.1 to 0~350bar gauge/absolute



NEW

P624

Compact pressure transmitter
with local display
0~0.1 to 350bar gauge/absolute

**P828**

Pressure transmitter with
digital switch
0~0.1 to 350bar gauge/absolute

**T75S**

Temperature transmitter
Input:RTD
Output:4~20mA, DC

**T156**

Temperature transmitter
Input:RTD
Output:4~20mA, DC

**T158**

Temperature transmitter
Input:RTD
Output:4~20mA, DC

**T159**

Temperature transmitter
Input:RTD
Output:4~20mA, DC



NEW

T760

Programmable
temperature transmitter
Input:RTD, T/C
Output:4~20mA, DC

**T900**

Temperature transmitter
Input:RTD
Output:4~20mA, DC

**L72S**

Tank mounted level transmitter
0~0.1 to 35bar gauge/absolute

**L127**

Submersible depth and
level transmitter
0~0.1 to 35bar gauge/absolute

**E100**

Explosion proof type
local indicator
Display:LED 4 digit

**GL-2L**

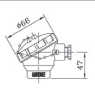
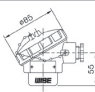
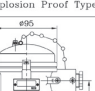
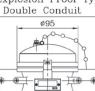
Panel mounting digital indicator
Input:multi(RTD, Volt, TC, mA)
Output:2 alarm, 4~20mA(optional)
Display:LED 4 digit



Thermocouples R.T.D & thermowells



Head type

Compact Type	General type Weatherproof
	
Material : ALDC	Material : ALDC 304SS, 316SS
Explosion Proof Type	Explosion Proof Type Double Conduit
	
Material : ALDC 316SS	Material : ALDC 316SS

R120

Sheathed thermocouple

Element:K, E, J, T, N

R.T.D.-Pt 100Q

Accuracy:standard-0.75%(for reading temp.)
special-0.4%(for reading temp.)

Sheath outer diameters:1.0, 1.6, 2.3, 3.2,
4.8, 6.4, 8.0, 9.5, 12.7



R220

Sheathed type resistance temperature detector

Element:Pt 100Q

Temperature range:-200 ~ 600°C
(ceramic type element)

Accuracy

Type	Nominal resistance (Ω at 0°C)	Resistance ratio R100/R0	Class	Tolerance (°C)	Rated current (mA)
Pt100	100	1.3851	A	±(0.15+0.002 t)	1,2
			B	±(0.3+0.005 t)	1,2,5

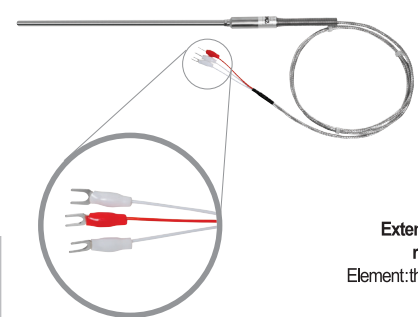


R231

Sanitary resistance temperature detector

Range:-50 to 0~200°C
Stem 304/316SS

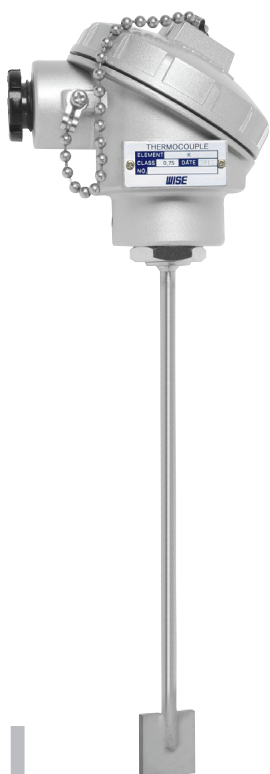
Tri-clamp connection 1, 1.5 and 2 inch



R300

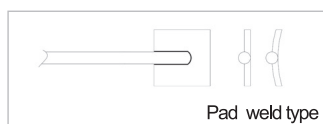
Extension lead wire thermocouple &
resistance temperature detector

Element:thermocouple-K, E, J, T, N, R, S, B
R.T.D. -Pt 100Q



Knife edge type

*Only available for thermocouple
6.4, 8.0, 9.5, 12.7 outdia.



Pad weld type

R600

**Tube skin thermocouple &
resistance temperature detector**

Service intended: tube skin temperature sensor are designed to measure surface temperature of pipes and tubes typically located within boilers, cokers, furnaces, heat exchangers, and reactors. This type of thermocouple & RTD is typically used within industrial high temperature and/or corrosive environments where fast and accurate temperature measurement is critical. Two common designs are knife edge-pad, and plate weld pad.
Element: thermocouple - K, E, J, T, N, R, S, B
R.T.D. - Pt 100Ω



R500

**Multi point thermocouple &
resistance temperature detector**

Element: thermocouple - K, E, J, T, N
R.T.D. - Pt 100Ω
Junction box material: aluminum (standard) stainless



**R941
R942**

**Explosion proof sheathed thermocouple &
resistance temperature detector**

Element: thermocouple - K, E, J, T, N, R, S, B
R.T.D. - Pt 100Ω
ATEX II 2 G Ex d IIC T6, IECEx Ex d IIC T6



**R951
R952**

**Intrinsic safety sheathed thermocouple &
resistance temperature detector**

Element: thermocouple - K, E
R.T.D. - Pt 100Ω
ATEX II 1/2 G Ex ia IIC T6 to T1

Thermowells



**A500
A510**

**Close end tube (pipe) type
thermowell**



A600

**Bar stock thermowells
with thread connection**

Wake frequency calculations in
accordance with ASME PTC 19.3



A603

Sanitary thermowell

Gauge connection 1/2" NPT (F)
Tri-clamp connection 1, 1.5 and 2 inch
Surface finish 16-32 Ra



**A610
A611
A612
A623**

**Bar stock thermowells
with flange connection**

Wake frequency calculations in
accordance with ASME PTC 19.3



**A630
A631
A632**

**Bar stock thermowells
with welded connection**

Wake frequency calculations in
accordance with ASME PTC 19.3

Switches & recorders



P930

Pressure recorder

Case dimension: 246mm(W) × 271mm(H)

Range: 0~5kPa to 0~10MPa

Case aluminium, element 316SS



NEW



P932

Pressure & temperature recorder

Case dimension: 246mm(W) × 271mm(H)

Case aluminium, element 316SS



P940

Weatherproof pressure switch

Range: 0.1~0 to 0.1~2.5MPa

0~0.1 to 0~35MPa

Case aluminium, element 316SS



P945

Weatherproof pressure switch

Ambient temp: -20~60°C

Range: -15~400mbar



P953

Pressure switch

Explosion proof: Ex d IIC T6

Ambient temp: -20~60°C

Adjustable range: 1kPa~10MPa



NEW

PS154

Digital gas density switch

Range: 0.3~0.7MPa

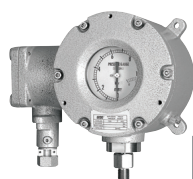
40(W)mm × 40(H)mm × 64(D)mm

Case material 304SS



P970

Differential pressure switch
Explosion proof: Ex d IIC T6
Ambient temp: -20~+60°C
Adjustable range: 1kPa~3.5MPa



P990

Explosion proof indicating pressure switch
Range: 0.1~0 to 0~40MPa
Case aluminium, element 316SS



T930

Temperature recorder
Case dimension: 246mm(W)×271mm(H)
Range: -50~600°C
Case aluminium, element 316SS



T940

Weatherproof temperature switch
Range: -50~50 to 0~700°C
Case aluminium, element 316SS



T953

Temperature switch
Explosion proof: Ex d IIC T6
Ambient temp: -20~60°C
Adjustable range: -20~250°C



T990

Temperature indicating switch
Explosion proof: Ex d IIC T6
Ambient temp: -20~60°C
Adjustable range: -20~250°C



T932

Pressure & temperature recorder
Case dimension: 246mm(W)×271mm(H)
Case aluminium, element 316SS

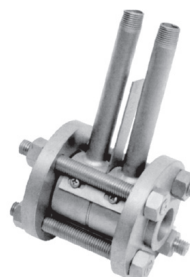


Flow elements & level gauges



F100

Orifice plate



F200

Orifice plate with ring

Orifice bore type: concentric square edged orifice, quadrant edged orifice

Orifice type	Fluid type					Nominal line size normally used	
	Gas(vapor)		Liquid				
	Clean	Dirty	Clean	Dirty	Viscous	JIS(mm)	ANSI(inch)
Concentric-square edge	E	X	E	O	X	40 to 1500	1 1/2 to 60
Concentric-quadrant edge	X	X	E	O	E	40 to 250	1 1/2 to 10
Eccentric-square edge	O	O	O	E	X	100 to 350	4 to 14
Segmental-square edge	O	O	O	E	X	100 to 350	4 to 14



F300

Orifice plate with holding ring

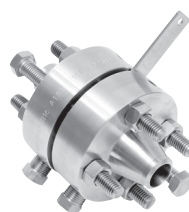
Orifice bore type: concentric square, edged orifice, quadrant edged orifice



F400

Restriction orifice plate

Restriction orifice, multi hole, multi stage



F500

Orifice flange ass'y

Mounting type: welding neck slip-on, socket-weld, ring-joint welding neck
Nominal diameter: 25mm~520mm



F600

Flow nozzle

Mounting type: flange type, weld-in type, holding ring type
Nominal pipe size available: 50mm~630mm



F700

Venturi tube

Venturi type: fabricated flange type, fabricated weld-on type, machined flange type, machined weld on type rectangular type
Nominal pipe size available: 50mm ~ 1200mm



F750

Venturi tube

Beveled end, flanged end



L100

Reflex type level gauge

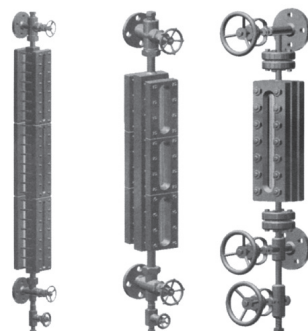
Type: reflex

Visible length: 170 to 4000mm max

Maximum no. of section: 13section

Vessel connection: 1/2"~2" (15A~50A) flanged by your requir

Chamber test pressure: working pressure X1.5



L200

Transparent type level gauge

Type: transparent

Visible length: 170 to 4000mm max

Maximum no. of section: 13section

Vessel connection: 1/2"~2" (15A~50A) flanged by your requir

Chamber test pressure: working pressure X1.5



L300

Magnetic float type level gauge option level switch/transmitter

Max. pressure: 19MPa

Max. temperature: 350°C

Specific gravity: min. 0.45

Viscosity: max 50 cp



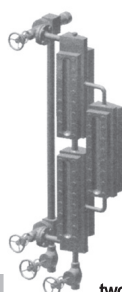
L400

Tubular gauge

Working pressure: 0.48MPa (max)

Working temperature: 170°C (max)

Hydro test pressure: 0.73MPa



L500

Transparent & two-color type level gauge

Max. pressure: 14.6MPa



L510

Two-color multi-port type level gauge

Max. pressure: 21.5MPa



S110

Sight glass

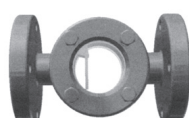
Size: 1/2"~8"

Connections: flanged end

Max. pressure: 2.9MPa

Max. temperature: 300°C

Glass: tempered, pyrex



S210

Flapper type sight glass

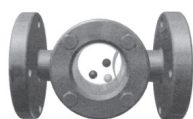
Size: 1/2"~8"

Connections: flanged end

Max. pressure: 2.9MPa

Max. temperature: 300°C

Glass: tempered, pyrex



S310

Ball type sight glass

Size: 1/2"~8"

Connections: flanged end

Max. pressure: 2.9MPa

Max. temperature: 100°C

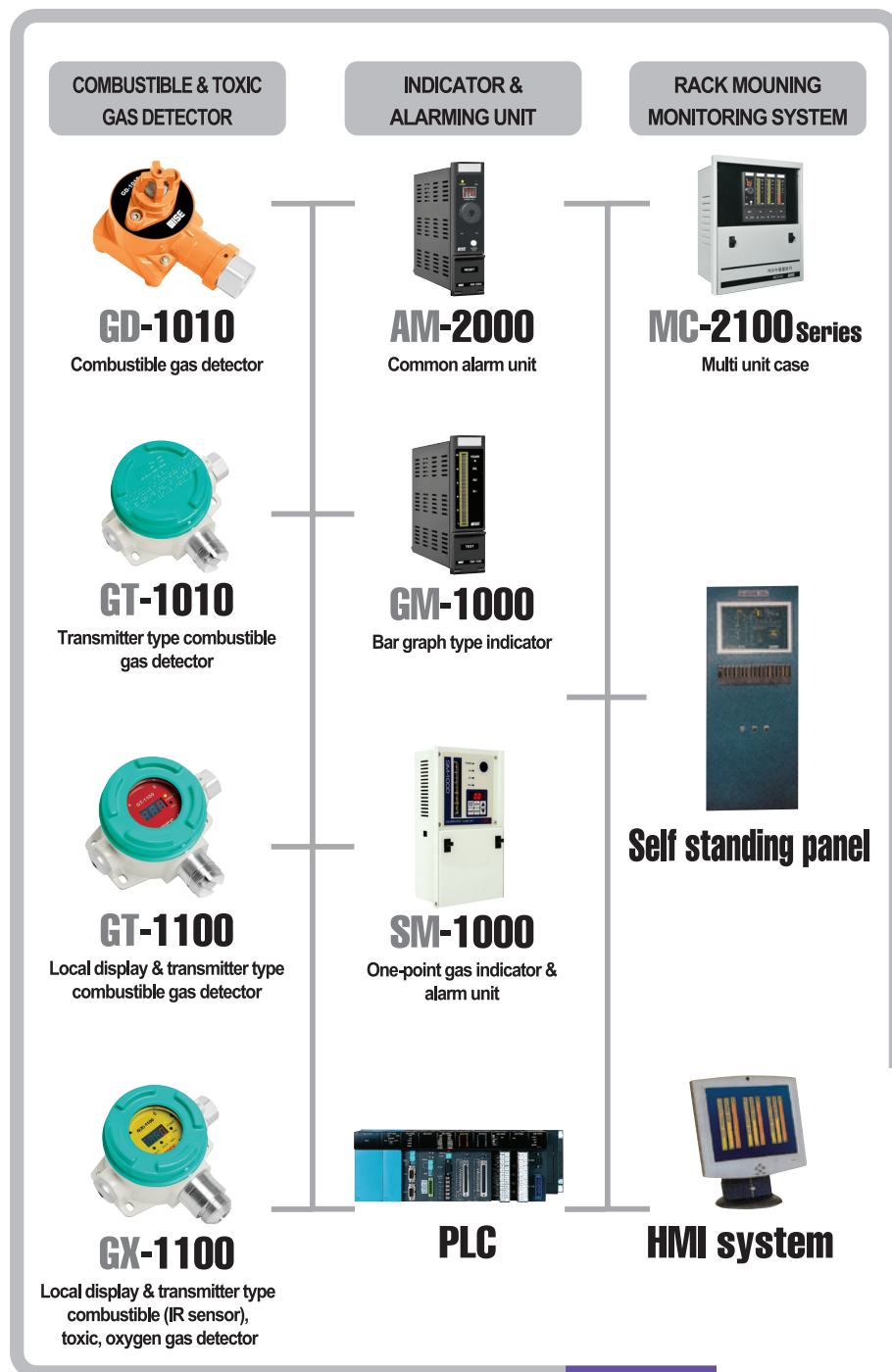
Glass: tempered, pyrex



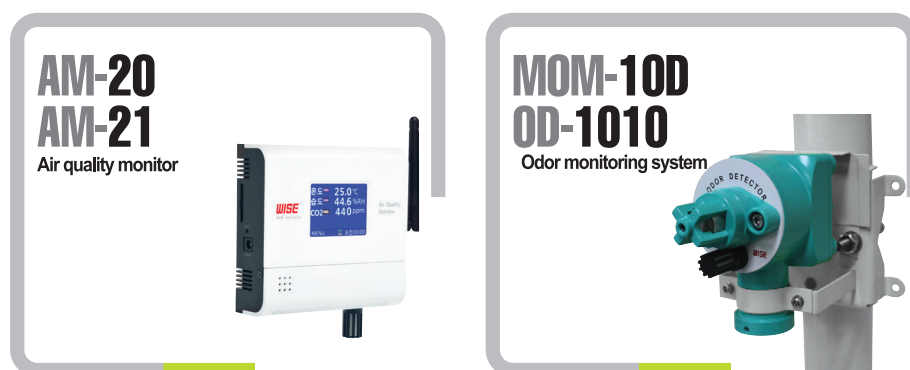
Gas detection system

Environment product

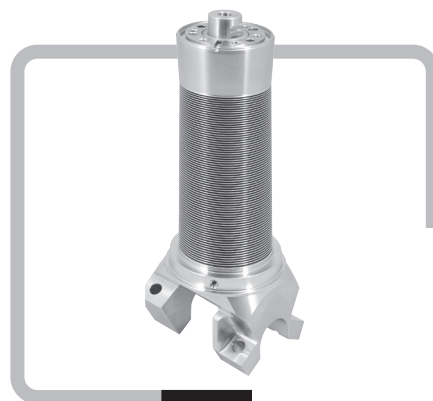
Gas detection system



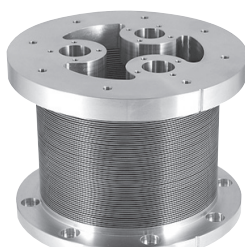
Environment product



Welded bellows



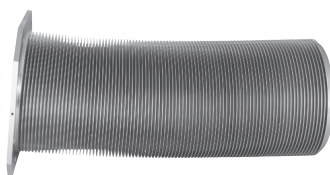
Chuck Bellows Ass'y



Damper Bellows



Door Gate Valve Bellows



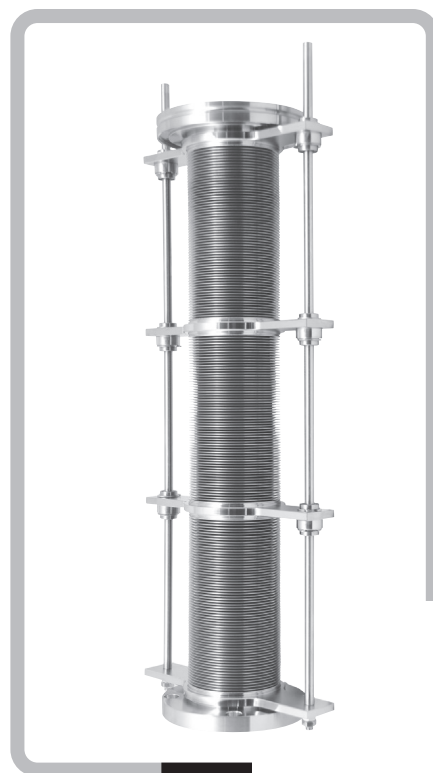
Lift Bellows Ass'y



V3 Bellows



BASR Bellows



Certificate list



Sort of certificate	Certificate name	Issue date	Scope of certificate	Certified by	Remark
Quality management system	Quality management system (ISO 9001 : 2008)	Aug. 03, 2009	Pressure gauge, switch, transmitter, temperature gauge, sensor, level gauge , flow element, orifice	Korean foundation for quality	
Environmental management system	Environmental management system (ISO 14001 : 2004)	Nov. 05, 2012	Design, development, production and sales for all products	Korean foundation for quality	
KEPIC certificate	KEPIC - EN	Sep. 19, 2011	Temperature sensor (Thermocouple & R.T.D)	Chairman of korea Electric Association	
	KEPIC - MN	Sep. 19, 2011	thermowell		
KS marking	Korean standard marking (KS B 5305)	Apr. 27, 1983	Bourdon tube type pressure gauge	Korean Standards Association	
DIN marking	Type approved pressure gauge (DIN : EN837-1)	Jul. 21, 1999	Pressure gauge [P252, P253, P258, P259]	TUV Rheinland	
CE marking	Declaration of conformity	Aug. 30, 2003	Pressure gauge [P252, P253, P258, P259, P257]	Internal Production Control	
Explosive atmospheres - flame proof enclosures	Ex certificate of conformity (Ex d IIC T6)	Sep. 30, 2009	Temperature sensor (Thermocouple & R.T.D) - [R series]	KGS	
	Ex certificate of conformity (Ex d IIB + H2 T6)	Apr. 12, 2010	Pressure indicating switch [P990]	KOSHA	
	Ex Certificate of Conformity (Ex d IIC T6)	Apr. 12, 2010	Temperature sensor (Thermocouple & R.T.D) - [RC type]	KGS	
	Ex certificate of conformity (Ex d IIC T6)	Mar. 12, 2010	Temperature sensor (Thermocouple & R.T.D : Movable sheath type) - [RS type]	KGS	
	Ex certificate of conformity (Ex d IIB + H2 T6)	May. 28, 2008	Temperature transmitter [R912]	KOSHA	
	Ex certificate of conformity (Ex d IIC T6)	Jul. 14, 2011	Pressure & temperature switch [953 series]	KGS	
	Ex certificate of conformity (Ex d IIB + H2 T6)	jUN. 07, 2011	Temperature indicating switch [T990]	KOSHA	
	Ex certificate of conformity (Ex DP II 13)	Feb. 11, 2009	Temperature sensor (R.T.D) - [R series]	KOSHA	
	IECEx certificate of conformity (Ex d IIC T6 Ga / Gb)	Nov. 30, 2004	Pressure & temperature Switch [953 series]	KGS	
	IECEx certificate of conformity (Ex d IIC T6 Ga / Gb)	Dec. 17, 2004	Temperature sensor (Thermocouple & R.T.D) - [ETR series]	KGS	
	ATEX certificate of conformity (Ex d IIC T6 Ga / Gb)	Aug. 22, 2006	Pressure & temperature switch [953 series]	LCIE	
	ATEX certificate of conformity (Ex d IIC T6 Ga / Gb)	Aug. 22, 2006	Temperature sensor (Thermocouple & R.T.D) - [ETR series]	LCIE	
	Ex certificate of conformity (Ex d IIC T6)	Jan. 18, 2012	Diff. pressure switch [P991]	KOSHA	
Explosive atmospheres - intrinsic safety type	IECEx certificate of conformity (Ex ia IIC T6..T1 Ga/Gb)	Mar. 27, 2012	Temperature sensor (Thermocouple & R.T.D) - [ETR10 series]	KTL	
	ATEX EC type examination certification (Ex ia IIC T6..T1 Ga / Gb)	Dec. 08, 2009	Temperature sensor (Thermocouple & R.T.D) - [ETR10 series]	DEKRA	
	Ex certificate of conformity (Ex ia IIC T6)	MAY. 06, 2011	Temperature sensor (Thermocouple & R.T.D) - [ETR10 series]	KOSHA	
3-A symbol	3-A symbol certificate	Jan. 11, 2006	Sanitary pressure & temperature gauges, temperature sensor, transmitters, thermowell (P752, P753, PA126, PA127, T123, R231, R232, A603)	3-A Sanitary Standard, Inc.	
Type approval	Type approval certificate	Dec. 13, 2010	Temperature Sensor (R.T.D DIN head type) - [R221]	Germanischer Lloyd	
GOST-R	Voluntary / D of C	Jul. 10, 2012	Pressure instrument, temperature instrument, thermowell, flow instrument, level instrument	п ро д М а ш Т е с т	

Oversea vendor registration status.

Country	Company name	Mark	Location	Vendor ID code	Item
KUWAIT	KOC (Kuwait Oil Company)		KUWAIT	DOCUMENT# RQAN / 591 / 5748 / 2007	PG, PS, DPT, DPG, DPS, TG, TW, TC, TE, RTD = Registered FE, FT, FS, LG, LT, VC, VT, FN = Registering in progress
	KNPC (Kuwait National Petroleum Company)		KUWAIT	277124	PG, PS, DPT, DPG, DPS, TG, TW, TC, TE, RTD = Registered Multi T, C = Registering in progress
U.A.E	ADNOC		U.A.E	906504	VT, FN, LS, LG, SG, LT, FE / TT, TS, TC, TW, RTD, TG
	ADGAS		U.A.E	100194	PS, PG, ACC / TC, TW, RTD, TG / SG, LG, FE, VT, FM / GR, GD, FD
	GASCO		U.A.E	000211	TGTC, TW, RTD, TS, TG / PG, DPG / LG, SG, LT, LS / H2S, CO detector
	TAKREER		U.A.E	905909	PG / TG, TW, TC, TW, RTD / LG, SG
	ADWEA		U.A.E	002214	FD, GD, GR, TC, RTD, TW, FT, PT, LT, TT, LG, PG, TG, DPG
KINGDOM OF SAUDI ARABIA	SABIC		KSA	204295	PG, PS / TG, TC, TS, RTD, TW / FM / LG, SG
	SEC		KSA	2004952	PG, PS / TG, TC, TS, RTD, TW / FE / LG, SG / GD
	SWCC		KSA		TG, RTD, TW / PG
IRAN	NIGC		IRAN	Doc# GO.112.37720	PW, DPG, PS / TT, TS, RTD, TC, TW, TG
QUTAR	QUTAR PETROLEUM		QUTAR	6808	PG, TG, TE, FE, LG
THAILAND	IRPC		THAILAND		PG, TG, TE

Item description	
Pressure instruments	PG = Pressure Gauge PS = Pressure Switch DPT = Differential PT DPG = Differential PG ACC = Accessories PT = Pressure Transmitter DPS = Differential Pressure Switch
Temperature instruments	TG = Temperature Gauge / Thermometer TC = Thermocouple TW = Thermowell RTD = Resistance Temperature Detector TS = Temperature Switch TT = Temperature Transmitter
Flow & level instruments & sight glass	FE = Orifice Flange & Assemblies FT = Flow Transmitter FS = Flow Switch LG = Level Gauge LT = Level Transmitter VC = Venturi Cone VT = Venturi Tube FN = Flow Nozzle SG = Sight Glass
Gas instruments	FD = Fire Detector GD = Gas Detector GR = Gas Recorder

Ventile & Fittings Praha spol. s r.o.

Components for fluid systems

Distributor for Czech Republic, Slovak Republic, Poland and Belarus

Družstevní 72
Líbeznice, 250 65
Czech Republic

Tel: +420 283 980 896 - 7
Fax: +420 283 980 898
E-mail: ventile@ventile.cz

www.ventile.cz

Rzeczpospolita Polska

FST Polska
ul. Turniejowa 8
53-014 Wrocław
Polska

Tel: +48 607 887 987
Fax: +420 283 980 898
E-mail: fstpolska@ventile.cz
www.fstpolska.pl

Slovenská republika

Ventile & Fittings Praha spol. s r.o.
Authorized representative:
Ing. Pavol Angelovič

Mobil: +421 910 913 649
Tel: +420 283 980 896
Fax: +420 283 980 898
E-mail: peter.angelovic@ventile.cz
www.fiting.sk

Беларусь

Ventile & Fittings Praha spol. s r.o.
Authorized representative:
Diana Efimchik

Velcom: +375 44 564 98 96
MTS: +375 29 758 77 88
Life: +375 25 715 34 16
E-mail: defimchik@ventile.cz
www.ventil.by



For more than 50 years the name WISE has been standing for innovation and quality in the field of pressure, temperature, flow, level and gas measurement. WISE is comprised of several products divisions, state-of-the art manufacturing facilities, service center and over 60 distributors worldwide.

WISE is a unique organization of individuals linked by the pursuit of excellence in product design, manufacture, service and distribution.

Major markets are served by WISE including the power generating industry, oil & gas, petrochemical and chemical processing, the pulp & paper industry, semiconductor manufacturing, the metallurgical industry, biopharmaceutical and food & beverage industry.

WISE will continue its efforts to make WISE products an integral part of the development plans of its customers. The new and exciting challenges will be met by building on a successful part rooted in recognizing and responding to customer needs, designing and producing quality products to meet those needs, proving premier customer service, and building strong & lasting business relationship.

WISE[®] WISE Control Inc.

(446-905) 2022, Deogyong-daero, Giheung-gu, Yongin-si, Gyeonggi-do, Korea
TEL : 82-31-280-5114 FAX : 82-31-283-9800

www.wisecontrol.com